



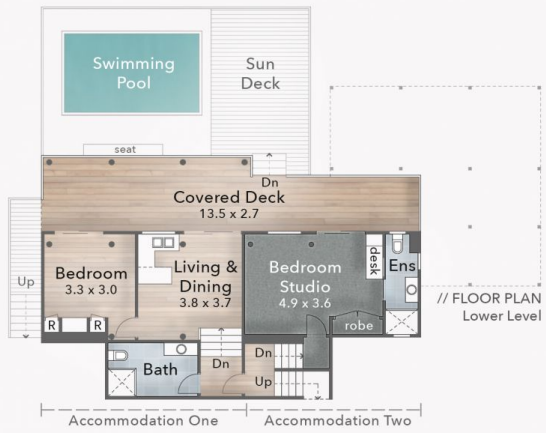
6 Burgundy Court TWEED HEADS SOUTH NSW

5 🚗 4 🚗 2 🚗

Immerse yourself in a pure sense of traditional grace and charm. Grandly positioned on a generous 806 square meter north facing allotment, this immaculately presented residence offers luxurious living, dual occupancy and entertaining on a grand scale. Never before been offered, homes of this size and exceptional quality are rarely available and demands your immediate attention!

Price : \$ 1,325,000
Building Size : 372 sqm
Land Size : 805 sqm
View : <https://www.coastalpropertycollective.com/sale/nsw/northern-rivers/tweed-heads-south/residential/house/6659609>

The strive for perfection knows no bounds at 6 Burgundy Court. This private sanctuary with fully landscaped gardens established hedges and lawn is the perfect environment for the family to entertain and enjoy. Accommodating a lifestyle where entertaining areas and private retreats coexist to create privacy, safety, and seamless flow at every turn. No dimension of this masterpiece of family design or dual occupancy has been left to chance.



LEGEND



BURGUNDY COURT

6 Burgundy Court
TWEED HEADS SOUTH
Block Size 806m²

- 4 Bed + Office
- 4 Bath
- 1 Car + Off-Street

FLOOR AREA SIZES

Internal 225m²
Decks 125m²
Carport & Storage 22m²
Total 372m² or 40 Squares

The overall presentation style, layout, imagery, fonts, background, colours and terminology are subject to strict copyright of Pure Design Concepts. No ownership is taken for building design. All measurements are approximate & individuals should rely on their own information. Find out more at: puredesignconcepts.com.au