



4 Shipstern Street KINGSCLIFF NSW

4  3  2 

Position, privacy and parkland views enhance the appeal of this immaculate dual-storey residence that occupies an elevated address edging Salt Village's resort facilities and within steps of Kingscliff's acclaimed beach and creek.

CONTACT MASON ON 0451 307 305 FOR FURTHER INFORMATION OR TO ARRANGE A PRIVATE INSPECTION.

Tropical foliage hems the backyard where the pool and cabana is observed beyond glass expanses from the substantial lifestyle space which opens seamlessly to an extensive under-roof alfresco entertaining terrace with ceiling fan.

High ceilings crown a considered floor plan that is spacious and light-filled including the living room, dining area, and

Price : \$ 2,450,000
Building Size : 466 sqm
Land Size : 672 sqm
View : <https://www.coastalpropertycollective.com/sale/nsw/northern-rivers/kingscliff/residential/house/7132509>



Mason Garten
0451307305

4 Shipstern Street, Kingscliff

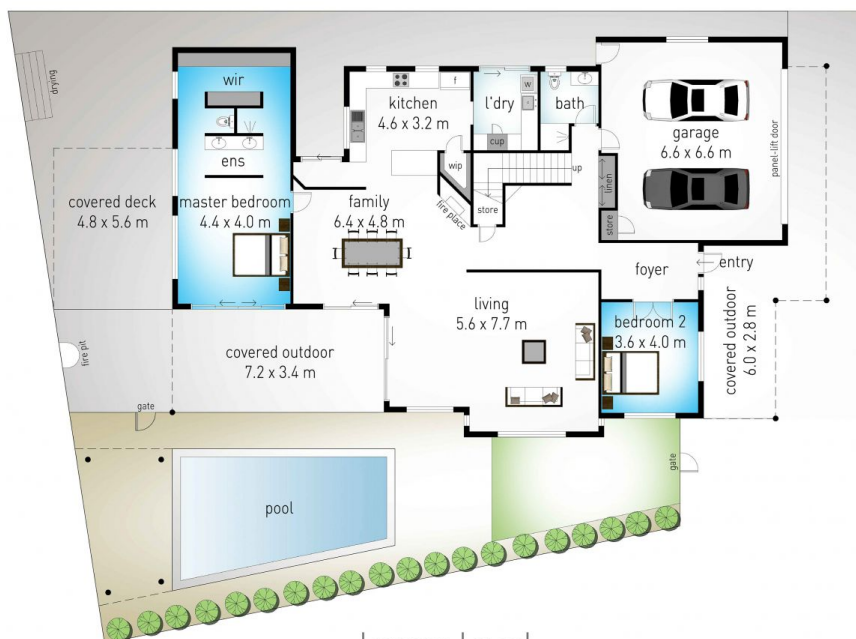
4 3 2

internal: 358 m² | external: 108 m² | total: 466 m²

**MASON
GARTEN**
REAL ESTATE



upper level



lower level



Dimensions are approximate. All information contained herein is gathered from sources we believe to be reliable. However we cannot guarantee its accuracy and interested persons should rely on their own enquiries.

